



THE RIVERLINE

The Riverline Study Design Approval Document



AGENDA

- Project Overview
- Public and Stakeholder Engagement
- Preliminary Design
- Environmental Review

THE
RIVERLINE



THE RIVERLINE



- A** The Moore Street Gateway
- B** Moore Street Plaza
- C** Moore Street Overlook
- D** Chicago Street Welcome Garden
- E** Chicago Street Neighborhood Connector
- F** The Del Refuge
- G** Louisiana Street Neighborhood Connector
- H** The Del Cycleway
- I** Alabama Street Crossing
- J** The Del Woodlands
- K** Mackinaw Street Play Garden
- L** Hamburg Street Neighborhood Connector
- M** Sidway Street Crossing
- N** The Junctures Woodlands
- O** The Junctures Neighborhood Connector
- P** The Junctures Overlook
- Q** The Wetland Trail
- R** The Highland Trail
- S** Smith Street Gateway
- T** The Industrial Heritage Trail
- U** The Basswoods Cove
- V** Double Bridge Crossing
- W** The Basswoods Rain Garden
- X** The Bridges Gateway
- Y** Half Bridge Overlook
- Z** Trail Features
- AA** Trail Entrances
- AB** Transit Stops
- AC** Parking
- AD** Buffalo Blueway Future Sites
- AE** Buffalo Blueway Sites

Concept Plan Update September 2024

Builds on Previous Efforts

- 2010 UB Concept Plan
- 2015-2020
 - 2017 WNYLC Public Engagement
 - 2018 Community Vision Plan
 - 2019 International Design Competition
 - 2020 Equitable Development Framework
- 2021-2023
 - 2021 Concept Design: The Riverline as a Place of Refuge
 - 2022 Federal Funding Award
 - 2024 The Riverline Study



CURRENT PHASE: WHO'S INVOLVED

- Stakeholders and the Public
 - City of Buffalo & Erie County
 - Political leaders (NYS Assembly & Senate)
 - Buffalo Niagara Waterkeeper
 - Local Community Centers
 - Business Owners
 - Gobike Buffalo
 - Seneca Buffalo Creek Casino
 - Niagara River Greenway Commission
 - GBNRTC
 - Community Members & Ambassadors

CURRENT PHASE: WHO'S INVOLVED

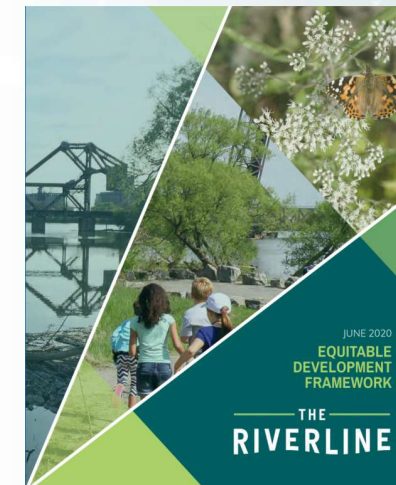
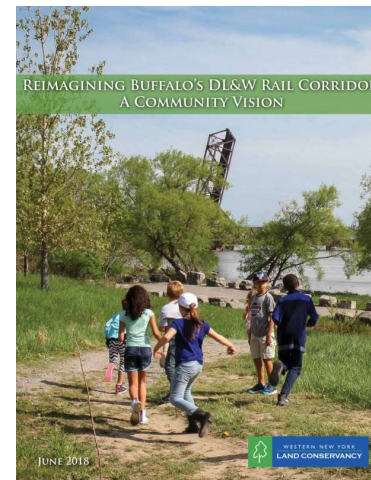
- Western New York Land Conservancy (WNYLC)
 - Funding and planning/development to date
- Niagara Frontier Transportation Authority (NFTA)
 - 40 acres NFTA owned parcels
 - Lead Agency for SEQRA
- Federal Highway Administration (FHWA)
 - Federal funding
 - Lead Agency for NEPA
- New York State Department of Transportation (NYSDOT)
 - Locally Administered Federal Aid (LAFA) program
- Consultant Team: C&S Engineers, Inc.
 - MKSK, EDR, Prospect Hill, KHEOPS, NW Contracting, University of Buffalo Center for Inclusive Design and Environmental Access (IDEA)

Study Project Objectives

- Enhance the attractiveness and viability of the abandoned DL&W corridor to encourage regional economic success.
- Enhance pedestrian and bicyclist safety.
- Provide recreation opportunities and promote physical activity.
- Relieve congestion and improve air quality by enhancing non-motorized modes of transportation.
- Minimize social, economic and environmental impacts to the project area by using existing infrastructure and cost-effective techniques in all design aspects.

Guiding Principles

- Community Vision Plan
- Equitable Development Framework



Study Scope

- Stakeholder and Public Engagement
- Preliminary Design
 - Geometric design standards
 - Safety
 - Universal accessibility
 - Neighborhood connectivity
- Environmental Review
 - National Environmental Policy Act (NEPA)
 - State Environmental Quality Review (SEQR)
 - Land use, social, economic, and environmental context
 - Direct, indirect, and cumulative impacts
 - Avoid, minimize, and mitigate impacts

STAKEHOLDER ENGAGEMENT

Project Committee

- 3 Meetings: May, July, September
- 75 members
 - Elected officials
 - Municipal representatives
 - Agency representatives
 - Local residents and businesses
 - Non-profit and community organizations

STAKEHOLDER ENGAGEMENT

Project Committee

- Buffalo Common Council Members
- Erie County Legislature
- NYS Assembly Members
- NYS Senators
- United State Senators and Congressional Representatives
- Erie County Environment & Planning
- City of Buffalo Office of Strategic Planning
- Erie Canal Harbor Development Corp
- Buffalo Niagara Waterkeeper
- Niagara River Greenway Commission
- Old First Ward Community Center
- OFW Residents, Business Owners, and Ambassadors
- Buffalo Municipal Housing Authority
- Valley Community Association
- The Valley Neighborhood Watch Alliance
- Silo City Lyceum
- Community Choice Award Winner Ambassadors
- WNY Railway Historical Society
- GObike Buffalo
- Seneca Buffalo Creek Casino / Team Seneca Cares
- Niagara Frontier Transportation Administration
- NYS Department of Transportation
- Greater Buffalo Niagara Regional Transportation Council
- The Western New York Land Conservancy
- Make Communities

STAKEHOLDER ENGAGEMENT

Social and Community Impacts Advisory Committee

- 3 Meetings: May, July, September
- 10 members representing
 - Local Governments
 - Arts and Culture
 - Economic Development
 - Community Building
 - Housing
 - Health and Wellness
- Individual outreach: Advocacy organizations

STAKEHOLDER ENGAGEMENT

Social and Community Impacts Advisory Committee

- Neighborhood representatives: Old First Ward, Perry, Valley
- City of Buffalo
- Erie County
- Buffalo Municipal Housing Authority
- Buffalo Health Equity Coalition
- local business
- Michigan Street African American Heritage Corridor
- Local Initiatives Support Corporation (LISC)

Public Meetings

- 125+ Attendees through July
- Round 1
 - March 9 – Old First Ward Community Center
 - March 12 – Commodore Perry Homes
 - March 14 – Valley Community Center
- Round 2
 - July 24 – Buffalo Creek Academy Charter School
 - July 27 – Old First Ward Community Center
 - July 30 – The Atrium at 500 Seneca
- Round 3
 - September 25 – Central Library
 - September 26 - Virtual

THE
RIVERLINE



Block Talks

- The Junctures, Katherine and Mackinaw St. – May 30
- Del Refuge, Louisiana and Miami St. – June 3
- Chicago Street, Louisiana and Miami St. – June 6
- The Basswoods, Red Jacket Park – June 12
- Del Refuge, Louisiana and Miami St. – June 18
- 25 Attendees – General Comments:
 - General excitement and support
 - Concerns: maintenance, privacy, safety, wildlife
- 14 Surveys – Average Excitement 7.8/10



Comments

- **100 + Comments Received Through July**
 - Project design – 53
 - Privacy
 - Connections to parks/trails
 - Lighting
 - Parking
 - Handicap accessibility
 - Social and community impacts – 18
 - Economic benefits
 - Education – interpretive signs
 - Incorporate neighborhood history

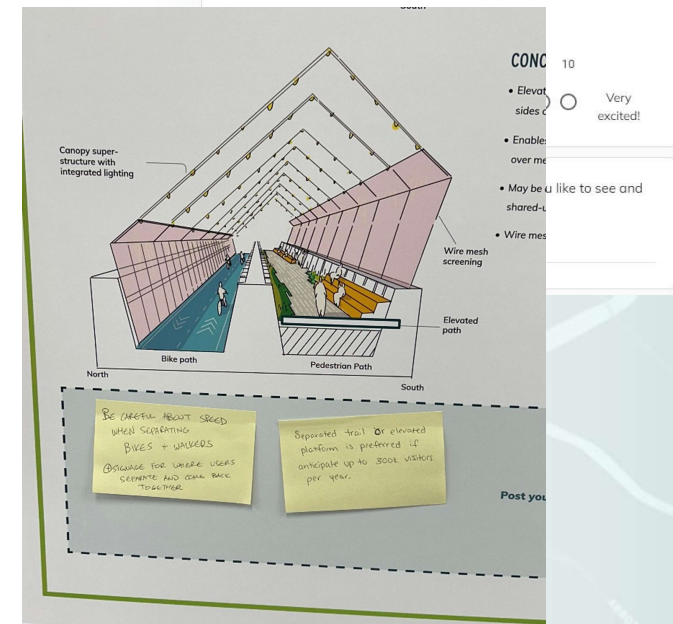
The Riverline Community Survey

Before The Riverline is built, we are carefully considering its potential impacts on the community and surrounding areas. We want to make sure all community members can review and understand the plans so far, and be able to give us their feedback, ideas, questions, and concerns.

Please fill out the survey below. Your views are very important to us! We need their help make The Riverline the best it can be.

alleen.maguiremeyer@gmail.com [Switch account](#)

Not shared



Comments

- Operations and Maintenance – 14
 - Safety/security
 - Maintenance/funding
 - Noise
 - Programming
 - Public art
- Environmental – 12
 - Wildlife habitat
 - Invasive species
 - Previous use – soil condition
- General – 10
 - Process
 - Schedule

HALF BRIDGE DESIGN CONCEPTS

The Riverline Study

Comments

Lights on walkway or bridges.

Security?

Funding for long term improvements or maintenance.

Incorporate first ward, valley memorabilia

Other than connecting the two bridges, all the rest was suggested. If you could "bridge" the two bridges, that would be a great idea. It would be a great way to connect the two bridges and the valley. It would be a great way to connect the two bridges and the valley. It would be a great way to connect the two bridges and the valley.

Could this design include a covered walkway to the water's edge?

The key to getting more people to use the river is to make it more inviting. One way to do this is to create a more inviting atmosphere. A great way to do this is to create a more inviting atmosphere. A great way to do this is to create a more inviting atmosphere.

Could the walkway be made more inviting? The bridge is a great idea. It would be a great way to connect the two bridges and the valley. It would be a great way to connect the two bridges and the valley. It would be a great way to connect the two bridges and the valley.

Post your thoughts here!

If you would like to receive project information, please provide your email address: _____

Optional contact information:
 Name: _____
 Address: _____

Comments can be submitted at the meeting or sent by:
Email: info@theriverline.com
Mail: The Riverline
 P.O. Box 1523
 Buffalo, NY 14215-9998

Scan the QR code to be directed to the Riverline website.

PRELIMINARY DESIGN

- Existing Conditions Assessment
 - Survey
 - Environmental Assessments
 - Bridge Investigations
- Design geometry
- Structures (bridges, retaining walls)
- Plans, profile, cross-sections, details
- Construction cost

Preliminary Design

- Geometric design standards
 - Pedestrian Only
 - 8-foot min.
 - Parallel cycle track/bike lanes along Miami Street to Hamburg Street
 - Multi-use Path
 - 10-foot min. paved surface
 - 12-foot clearance on bridges
 - Future Cycle track on Miami Street, Moore to Hamburg streets
- Neighborhood connectivity – access every block
- Universal accessibility
 - Multiple points: Chicago, Alabama-Hamburg block, Katherine, Smith
 - Access to all significant features/similar experience

Six New Bridges

- Louisiana Street
- Alabama Street
- Hamburg Street
- Sidway Street
- Katherine Street
- Smith Street



View south of Hamburg St. Bridge



View north of Louisiana St. Bridge

THE
RIVERLINE



New Retaining Wall: Hamburg to Sidway



Hamburg St. Bridge looking Northwest



Sidway St. Bridge looking Northwest

The Junctures

- Crosses
 - Katherine St.
 - Fitzgerald St.
 - Railroad
- Gradual ramp with areas for rest
- Open space below elevated path

THE
RIVERLINE



The Basswoods

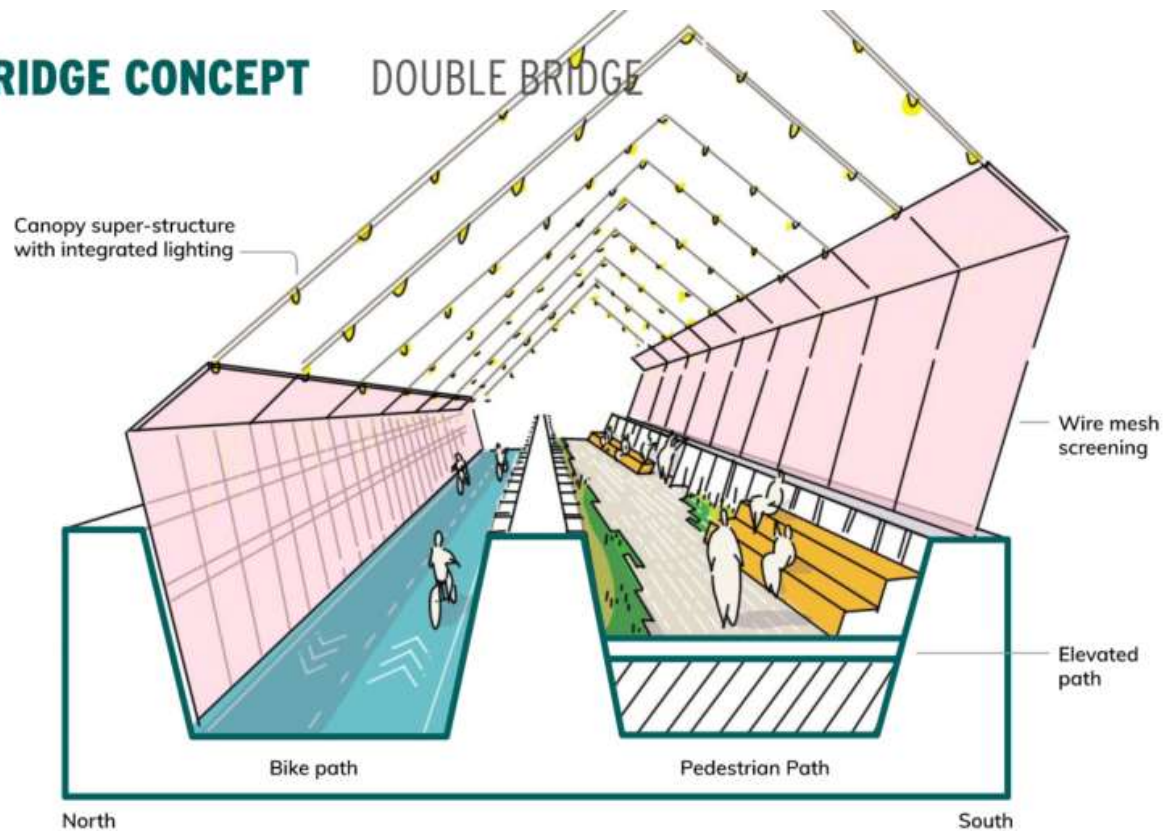


- Parking ~50 spaces
- Restrooms
- Accessible access
- Future connections:
 - Valley Nature Park
 - Red Jacket Park
- Connect to river

Double Bridge

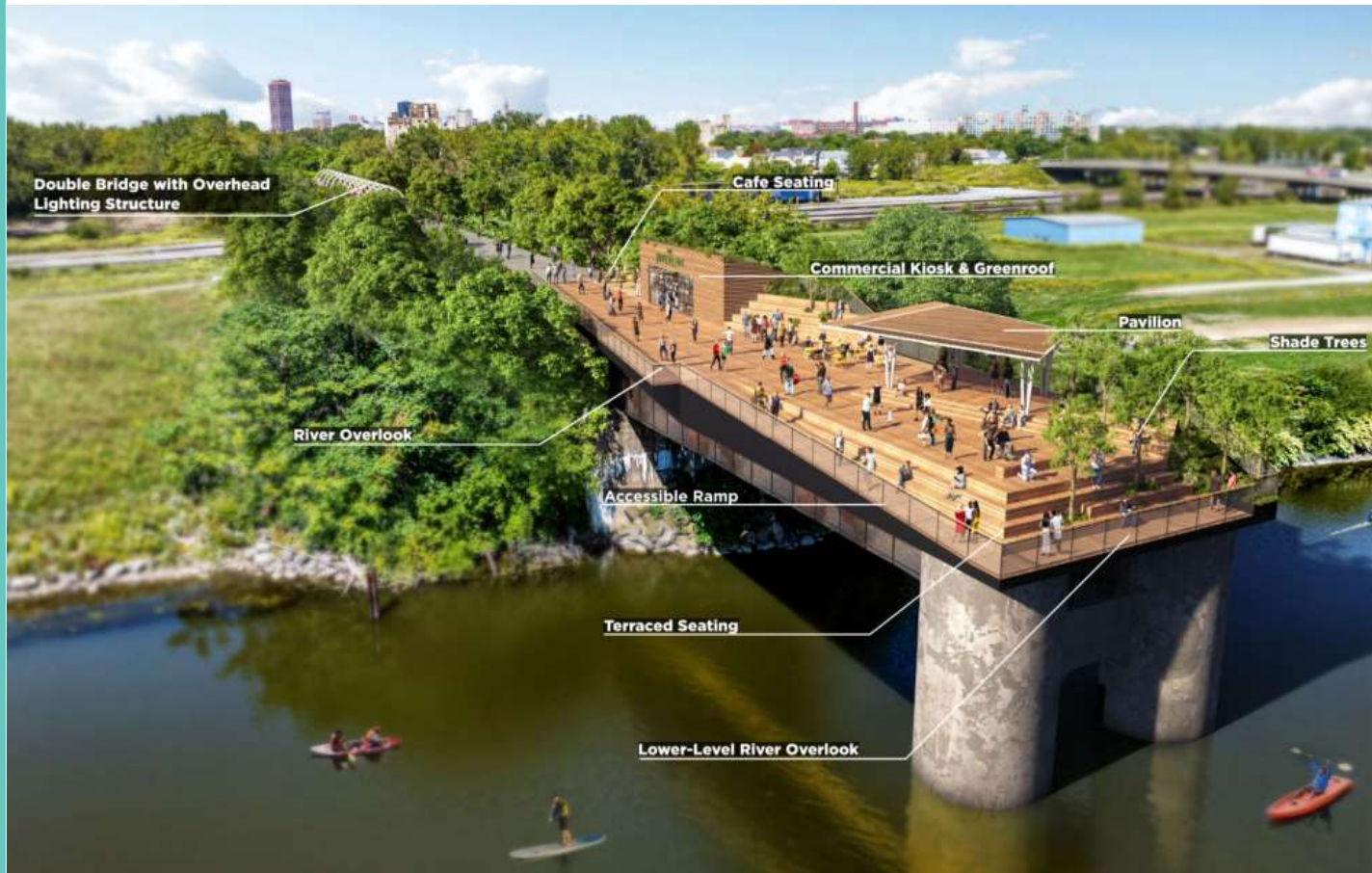
BRIDGE CONCEPT

DOUBLE BRIDGE



- Separate paths
- Elevated platform
- Views through metal screen
- Security and lighting
- Seating and landscaping for pedestrians

Half Bridge



- Extended accessible viewing platform
- Shade structure and seating
- Open space for programming/special events
- Restroom/kiosk

Cost Estimate

- \$80M-\$90M
- Preliminary estimate to be finalized before design approval in November.

THE
RIVERLINE



ENVIRONMENTAL REVIEW

- General Ecology
- Endangered Species
- Water: ground and surface
- Wetlands: state and federal
- Floodplains
- Coastal Zone Management
- Navigable Waterways
- Historic Resources
- Parks
- Hazardous Waste
- Asbestos
- Noise
- Air Quality
- Energy
- Invasive species
- Traffic

Detailed Studies

- **Social and Community Impacts**
 - Social
 - Socioeconomic
 - Environmental Justice
 - Physical/Civic
 - Public Services
 - Housing
- **Cultural Resources and Relevance Study**
 - Phase IA Archaeological Survey
 - Historic Resources Survey
- **Visual Impact Assessment (new bridges)**

Social and Community Impact Assessment

Report Topics

- Land Use & Zoning
- Transportation
- Recreation
- Community Assets
- Consistency with Local Plans
- Public Health Considerations
- Housing
- Socioeconomic Impacts
- Fiscal Impact
- Public and Community Services
- Environmental Justice



Social and Community Impact Assessment

Report Findings

- Consistent with zoning/plans
- Improve walkability and cycling
- Encourages physical activity to improve public health
- Increase access to parks and open space
- Improve community connectivity and cohesion
- Minimal impact to parking and transportation
- Increase in residential property values
- Increase economic activity, employment and labor income

THE
RIVERLINE

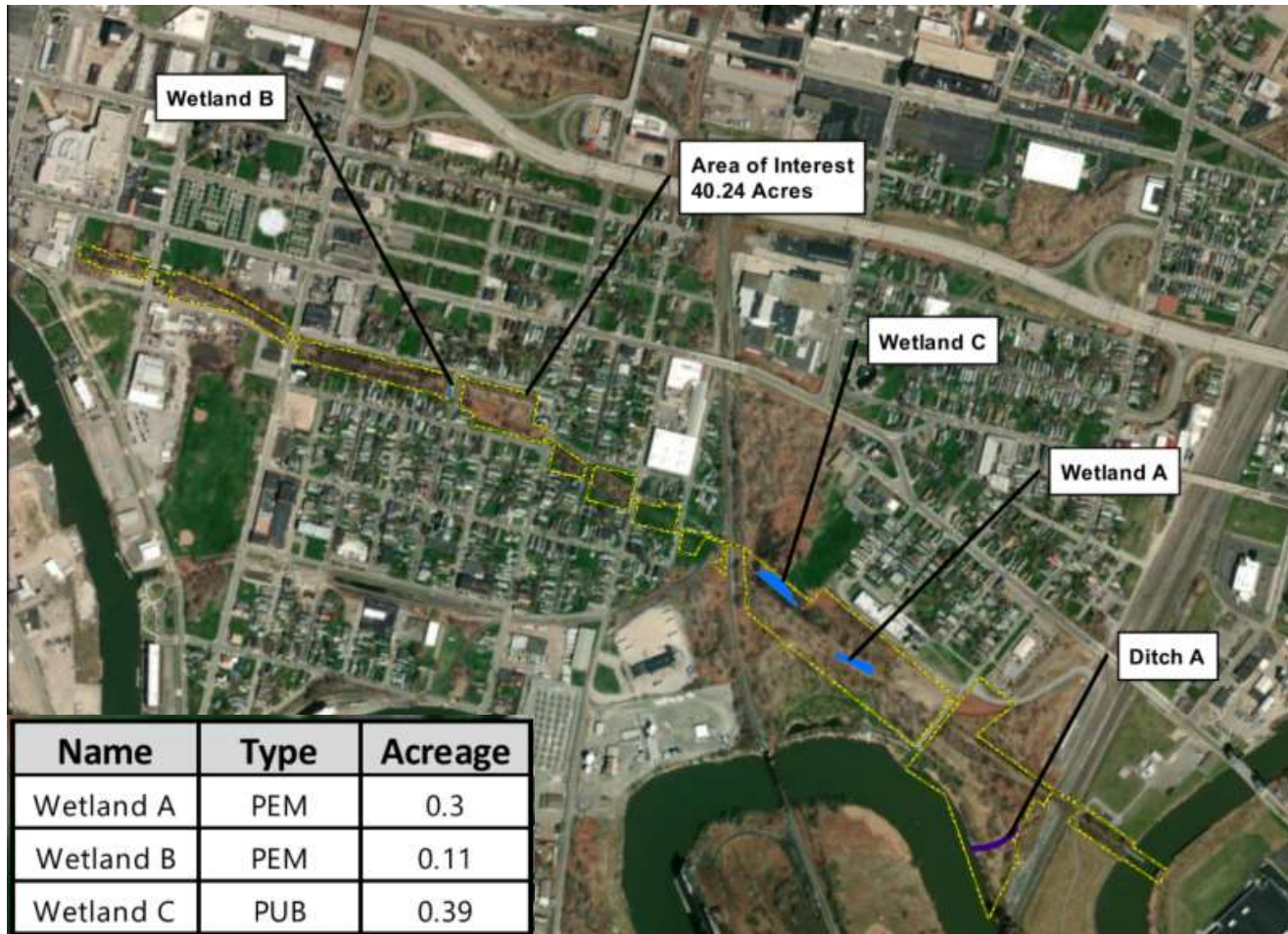


Ecology & Endangered Species

- Federal Endangered and Threatened Species
 - Possible presence of Federal candidate species Monarch butterfly
 - Currently not protected; Consultation with USFWS not required
- State Endangered and Threatened Species
 - Identified within or adjacent to area
 - State threatened bald eagle
 - Determination of “Unlikely to disturb nesting Bald eagles”
 - State endangered peregrine falcon
 - Determination of “No Take” as project will not impact habitat
 - Species of special concern spiny softshell
 - Determination of “No Take” as project will not impact habitat
- Invasive Species
 - Presence of over 15 species
 - Removal or treatment considered in design



Wetlands



- No state regulated wetlands
- No state tidal wetlands
- Federal jurisdictional wetlands exist
- Trail alignment avoids or minimizes impacts

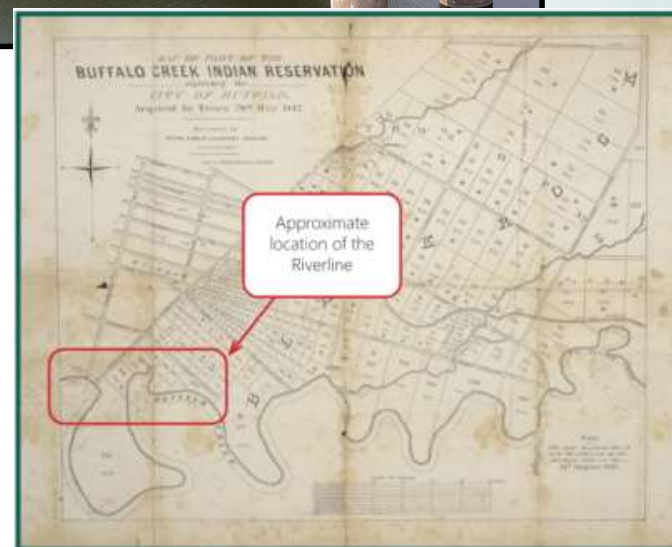
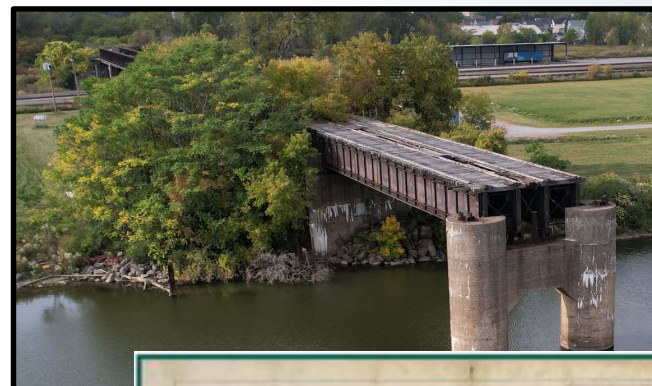
Hazard Waste / Contaminated Materials

- Phase 1 Environmental Site Assessment
- Mitigation plans to be prepared prior to construction



Cultural and Historic Resources

- Bridges over 50 years old:
 - Double Bridge
 - Half Bridge
- Properties eligible for listing in State or National Register of Historic Places
 - Courier Express, 119 Chicago St.
 - Allied Mills Complex (Historic Bldg District)
 - Allied Mills Main Warehouse, Buffalo River Place
 - Allied Mills Coal House, Buffalo River Place
- Location within former Haudenosaunee Buffalo Creek Indian Reservation
- Project is not anticipated to impact or disturb cultural or historic resources



ENVIRONMENTAL FINDINGS

- National Environmental Policy Act (NEPA)
 - Lead Agency: Federal Highway Administration (FHWA)
 - Class II Categorical Exclusion
- State Environmental Quality Review Act (SEQRA)
 - Lead Agency: Niagara Frontier Transportation Authority (NFTA)
 - Type 1
 - Anticipated Negative Declaration

THANK YOU!

THE
RIVERLINE

